



WORLD TRADE CENTER®
SAN LUIS POTOSÍ
PREMIUM INDUSTRIAL PARK

BIENVENIDO 환영 WELCOME BIENVENUE
欢迎 WILLKOMMEN ようこそ BENVENUTO

GRUPO
VALORAN.



Member of
WORLD TRADE CENTERS
ASSOCIATION



ATCO
GROUP
ranman
energy
Power Generation
Facility

Free Trade
Zone

CP
Intermodal
Terminal

TCM
Fuels
Transloading
Terminal

Aduanas
Customs
Office

Misión
Hotel

Commercial
Area

Offices
for Lease

WHERE INDUSTRY MEETS BUSINESS

OVERVIEW

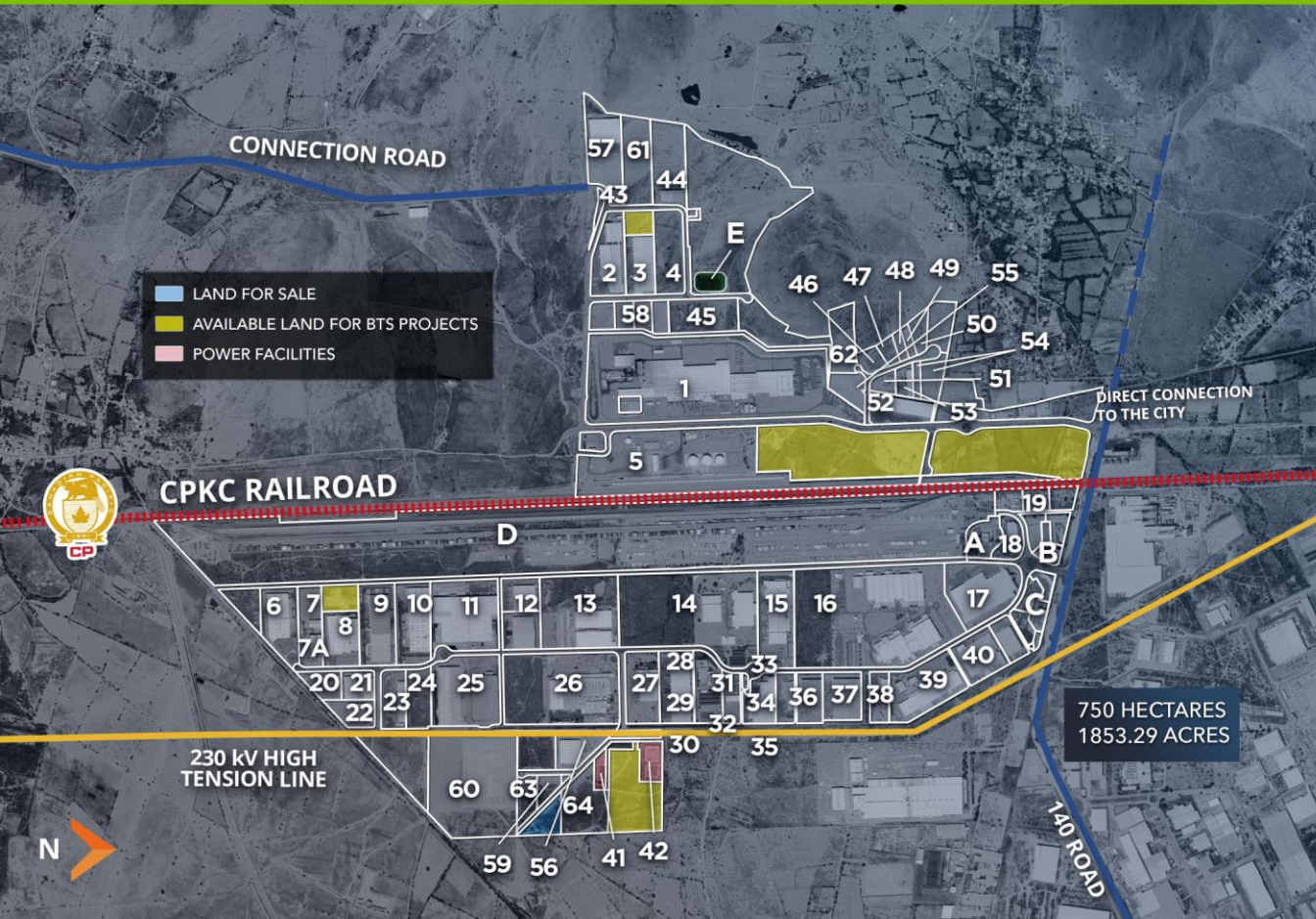
WTC 1

The first industrial park that combines business, commercial and logistics services to create a strategic environment for its clients.



AVAILABLE LAND FOR SALE AND BUILT TO SUIT FOR LEASE

WTC 1



- A - Customs Office
- B - Alpha Building (offices)
- C - WTC Commercial Zone
- D - Canadian Pacific Kansas City (Intermodal Terminal)
- E - Soccer Field

- | | |
|----------------------------------|--------------------------|
| 1 - Goodyear | 33 - System logistics |
| 2 - DTR Mexico | 34 - Dong Kwang |
| 3 - Ryder | 35 - Meto Kote |
| 4 - MEIWA | 36 - ABM Tool & Die |
| 5 - Fuels Transloading Terminal | 37 - Daikin |
| 6 - Autoneum | 38 - La Esperanza |
| 7 - Chunil México | 39 - SEL |
| 7 A - Solvay | 40 - Midori |
| 8 - Mayco | 41 - ATCO |
| 9 - Faurecia | 42 - Ranman Energy |
| 10 - Autoneum | 43 - Cajas Nilo |
| 11 - Motomex | 44 - Grupo Nelson |
| 12 - Nippon Express | 45 - Comercializadora Z |
| 13 - Midori | 46 - Losgra |
| 14 - ABB | 47 - Berrones |
| 15 - Faurecia | 48 - Aplintec |
| 16 - Dräxlmaier | 49 - Tarimas Durango |
| 17 - CSL | 50 - MD Transportes |
| 18 - Welldex | 51 - Potoquímica |
| 19 - Schnellecke | 52 - Bisonte |
| 20 - Twist | 53 - Aceros VS |
| 21 - FLIMSA | 54 - Tarimas Durango |
| 22 - ETO Magnetic | 55 - Bisonte |
| 23 - DTR Mexico | 56 - Sabaf Faringosi |
| 24 - Techno State | 57 - Haucan Park |
| 25 - Toyota Tsusho America, Inc. | 58 - Inmobiliaria Clemis |
| 26 - Valeo | 59 - Recimetsa |
| 27 - OTSCON | 60 - Franke |
| 28 - Ponce Disa | 61 - DTR Mexico |
| 29 - Fargos | 62 - Bisonte |
| 30 - TI Automotive | 63 - Bisonte |
| 31 - ABB | 64 - Himile |
| 32 - ALA | |

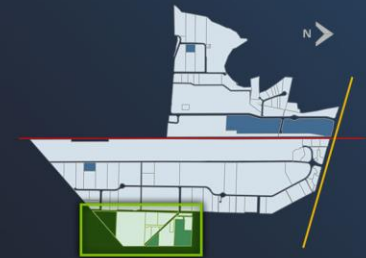
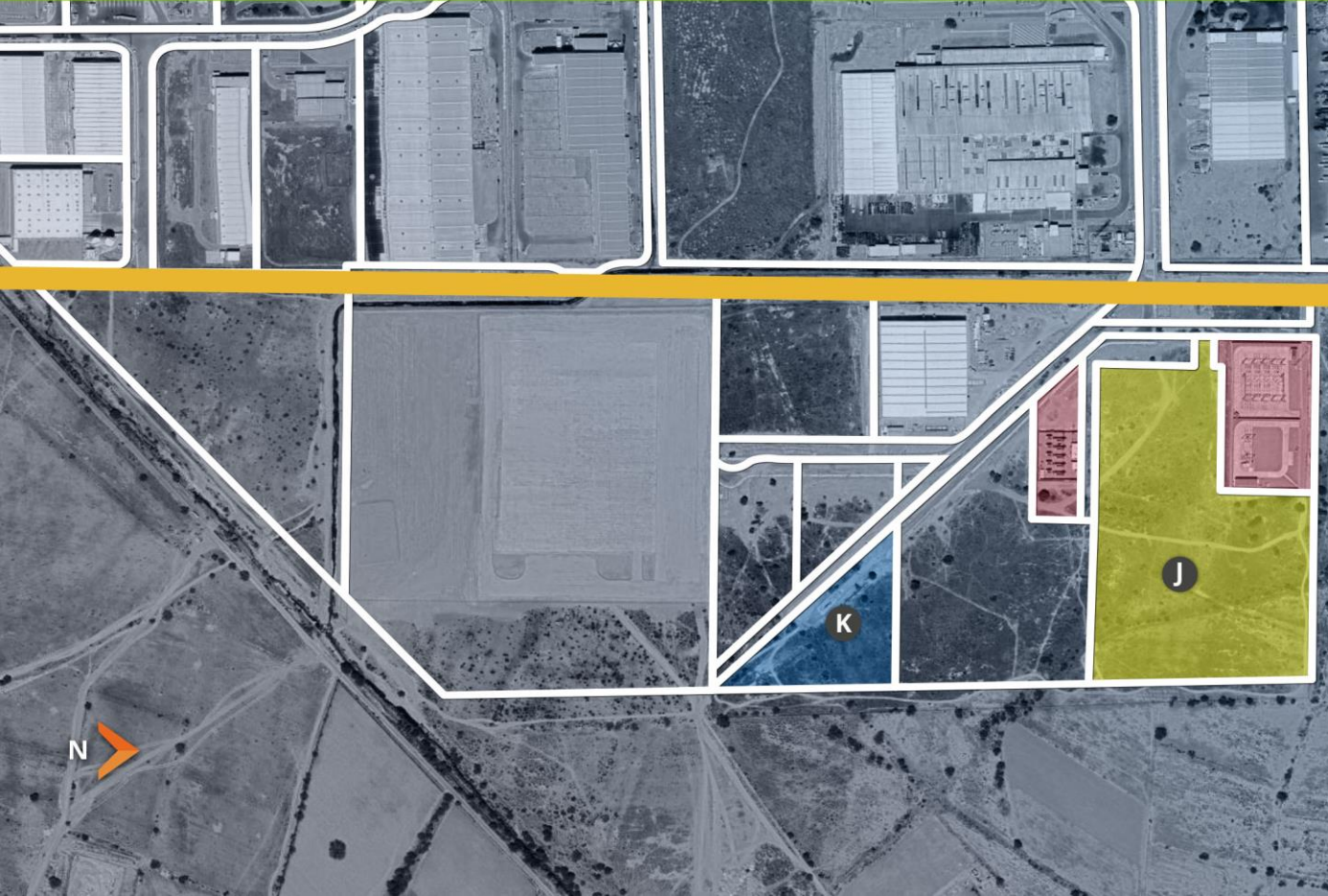
AVAILABLE LAND FOR SALE AND BUILT TO SUIT FOR LEASE

WTC 1

AVAILABLE LAND FOR SALE OR BTS PROJECT

J 64,413.55 m²

K 14,399.46 m²



- ONLY BTS TO LEASE
- LAND FOR SALE OR BTS
- POWER FACILITIES

AVAILABLE LAND FOR SALE AND BUILT TO SUIT FOR LEASE

WTC 1

AVAILABLE LAND FOR BTS PROJECTS

- M 151,740.36 m²
- N 134,102.96 m²



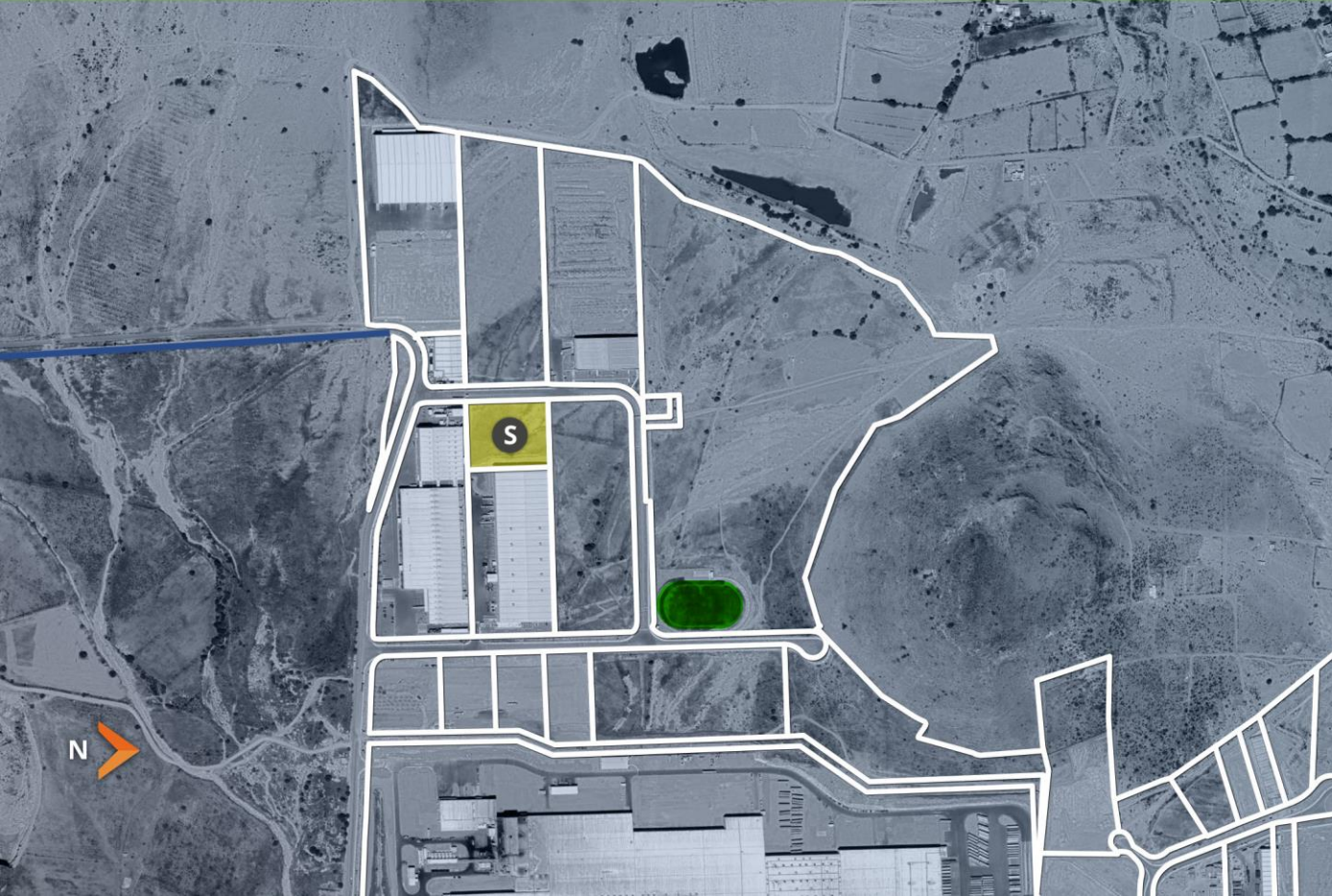
■ ONLY BTS TO LEASE

AVAILABLE LAND FOR SALE AND BUILT TO SUIT FOR LEASE

WTC 1

AVAILABLE LAND FOR BTS PROJECT

S 12,086.40 m²



■ ONLY BTS TO LEASE

AVAILABLE LAND FOR SALE AND BUILT TO SUIT FOR LEASE

WTC 1

AVAILABLE LAND FOR
BTS PROJECT

U 9,925.71 m²



CPKC RAILROAD



■ ONLY BTS TO LEASE



WORLD TRADE CENTER®
SAN LUIS POTOSÍ
PREMIUM INDUSTRIAL PARK

BIENVENIDO 환영 WELCOME BIENVENUE
欢迎 WILLKOMMEN ようこそ BENVENUTO

WTC 2

1400 HECTARES



Member of
WORLD TRADE CENTERS
ASSOCIATION

GRUPO
VALORAN®

AVAILABLE LAND FOR SALE AND BUILT TO SUIT FOR LEASE

WTC 2

- Utilities
- Land for sale and built to suit for lease
- Land reserve
- Future railroad yard
- Sold
- Commercial Zone

E - Future Railroad Yard

- 1 - Metal Technologies
- 2 - Thoni Alutec
- 3 - Universal Logistics
- 4 - Steel Dynamics
- 5 - Impro
- 6 - Auto Transportadora Genesis
- 7 - Veolia
- 8 - CFE
- 9 - IPS
- 10 - ThyssenKrupp
- 11 - Ficus
- 12 - BorgWarner
- 13 - Renova
- 14 - Confidencial
- 15 - Confidencial 2



AVAILABLE LAND FOR SALE AND BUILT TO SUIT FOR LEASE

WTC 2



- Utilities
- Land for sale

C 49,482.91 m² E 53,299.24 m²
 D 43,391.46 m² F 77,916.53 m²



- 5 - Impro
- 6 - Auto Transportadora Genesis
- 7 - Veolia
- 8 - CFE
- 9 - IPS
- 11 - Ficus
- 12 - BorgWarner
- 13 - Renova
- 14 - Confidencial
- 15 - Confidencial 2



AVAILABLE LAND FOR SALE AND BUILT TO SUIT FOR LEASE

WTC 2

- Utilities
- Land for sale

| | |
|----------------------------|----------------------------|
| G 11,032.44 m ² | M 10,000.00 m ² |
| H 9,524.29 m ² | N 10,000.00 m ² |
| I 10,000.00 m ² | O 8,899.22 m ² |
| J 10,000.00 m ² | P 10,000.00 m ² |
| K 10,000.00 m ² | Q 14,298.86 m ² |
| L 10,000.00 m ² | |



- 4 - Steel Dynamics
- 6 - Auto Transportadora Genesis
- 7 - Veolia
- 11 - Ficus



AVAILABLE LAND FOR SALE AND BUILT TO SUIT FOR LEASE

WTC 2

- Land for sale
- Future railroad yard

| | |
|----------------------------|----------------------------|
| R 26,091.82 m ² | U 20,000 m ² |
| S 20,000 m ² | V 19,583.42 m ² |
| T 20,000 m ² | W 32,148.33 m ² |

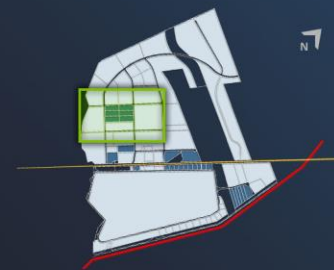


AVAILABLE LAND FOR SALE AND BUILT TO SUIT FOR LEASE

WTC 2

■ Land for sale

| | |
|----------------------------|-----------------------------|
| X 31,780.15 m ² | AA 33,322.52 m ² |
| Y 31,396.08 m ² | BB 31,396.08 m ² |
| Z 31,381.27 m ² | CC 31,381.27 m ² |



14 - Confidential
15 - Confidential 2



WTC CONTACT

Alejandro Zarazúa Menchaca

COMMERCIAL DIRECTOR

alejandrozarazua@wtcindustrial.mx

Minerva Cruz

BUSINESS ADVISOR

minervacruz@wtcindustrial.mx

José Luis Sánchez Ramírez

SALES MANAGER

luissanchez@wtcindustrial.mx

Cristina Monsiváis Pérez

BUSINESS ADVISOR

cristinamonsivais@wtcindustrial.mx



Av. Central No. 87 Eje 140 km 4.
Industrial Zone SLP

Ph. +52 (444) 161 50 10
info@wtcindustrial.mx

San Luis Potosi, Mexico 78395
www.wtcindustrial.mx